

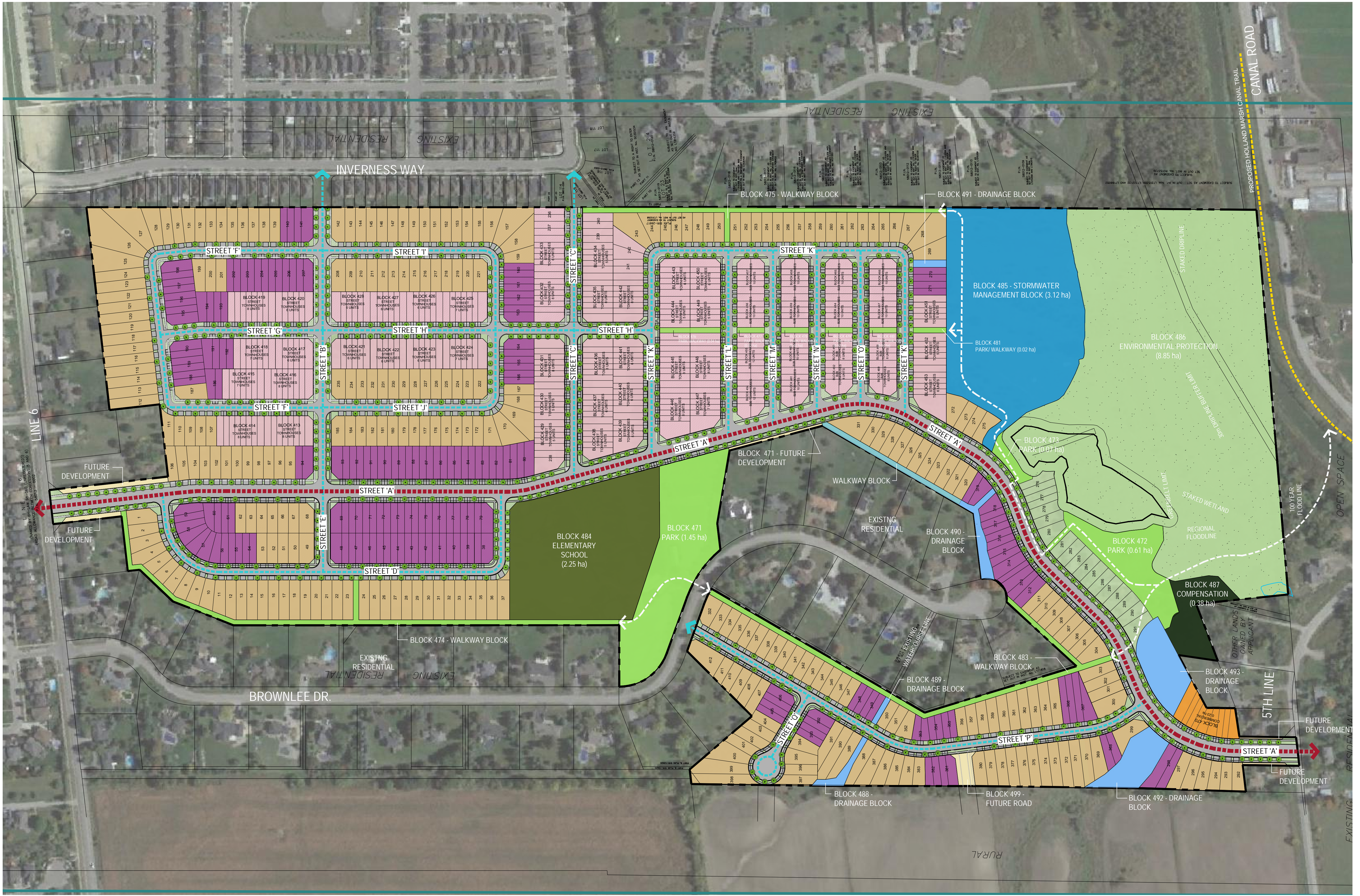
KEY PLAN



KEY MAP
N.T.S.

LEGEND

- BOUNDARY OF SUBJECT APPLICATION
- GREEN BELT LIMIT
- STAKED WETLAND
- 30m STAKED WETLAND BUFFER LIMIT
- STAKED DRIPLINE
- 30m STAKED DRIPLINE BUFFER LIMIT
- 100 YEAR FLOODLINE
- REGIONAL FLOODLINE
- COLLECTOR ROAD CONNECTIONS (SIDEWALKS ON BOTH SIDES OF STREET)
- LOCAL ROAD CONNECTIONS (SIDEWALK ON ONE SIDE OF STREET)
- POTENTIAL FUTURE TRAIL
- PROPOSED HOLLAND MARSH CANAL TRAIL (TRAIL SYSTEM MASTER PLAN, 2010)
- BOULEVARD TREE PLANTING
- SINGLE FAMILY RESIDENTIAL LOT
- SEMI-DETACHED RESIDENTIAL LOT
- TOWNHOUSE RESIDENTIAL LOT
- COMMERCIAL LOT
- CONCRETE WALKWAY PAVING
- ASPHALT PAVING
- SODDING
- PARKETTE BLOCK
- FUTURE DEVELOPMENT LOT
- STORM WATER MANAGEMENT BLOCK
- ENVIRONMENTAL PROTECTION
- COMPENSATION BLOCK
- WALKWAY BLOCK
- DRAINAGE BLOCK
- SCHOOL BLOCK



BRADFORD HIGHLANDS SUBDIVISION

CONCEPTUAL LANDSCAPE AND TRAILS PLAN

DECEMBER 2024

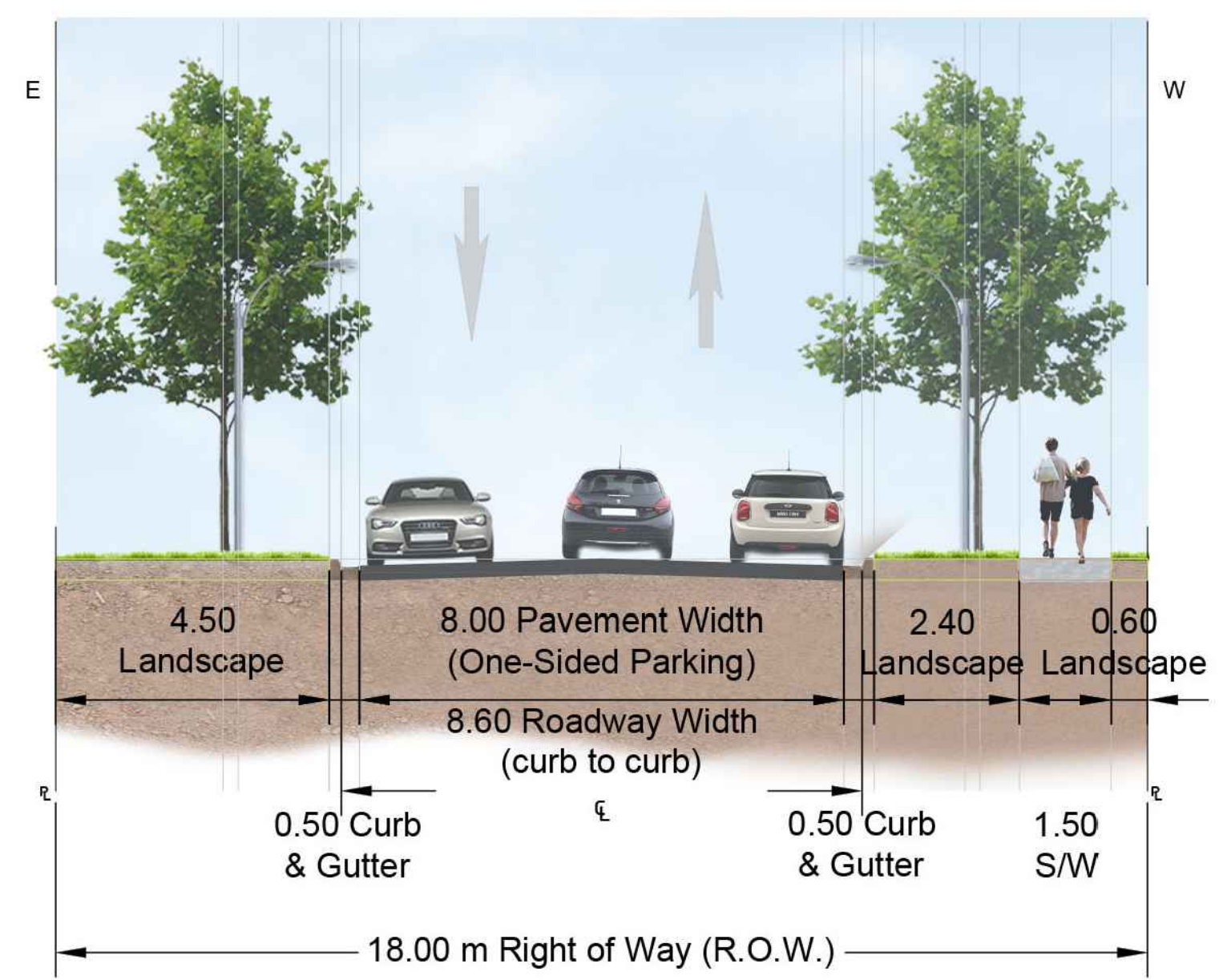


SCALE 1:2000

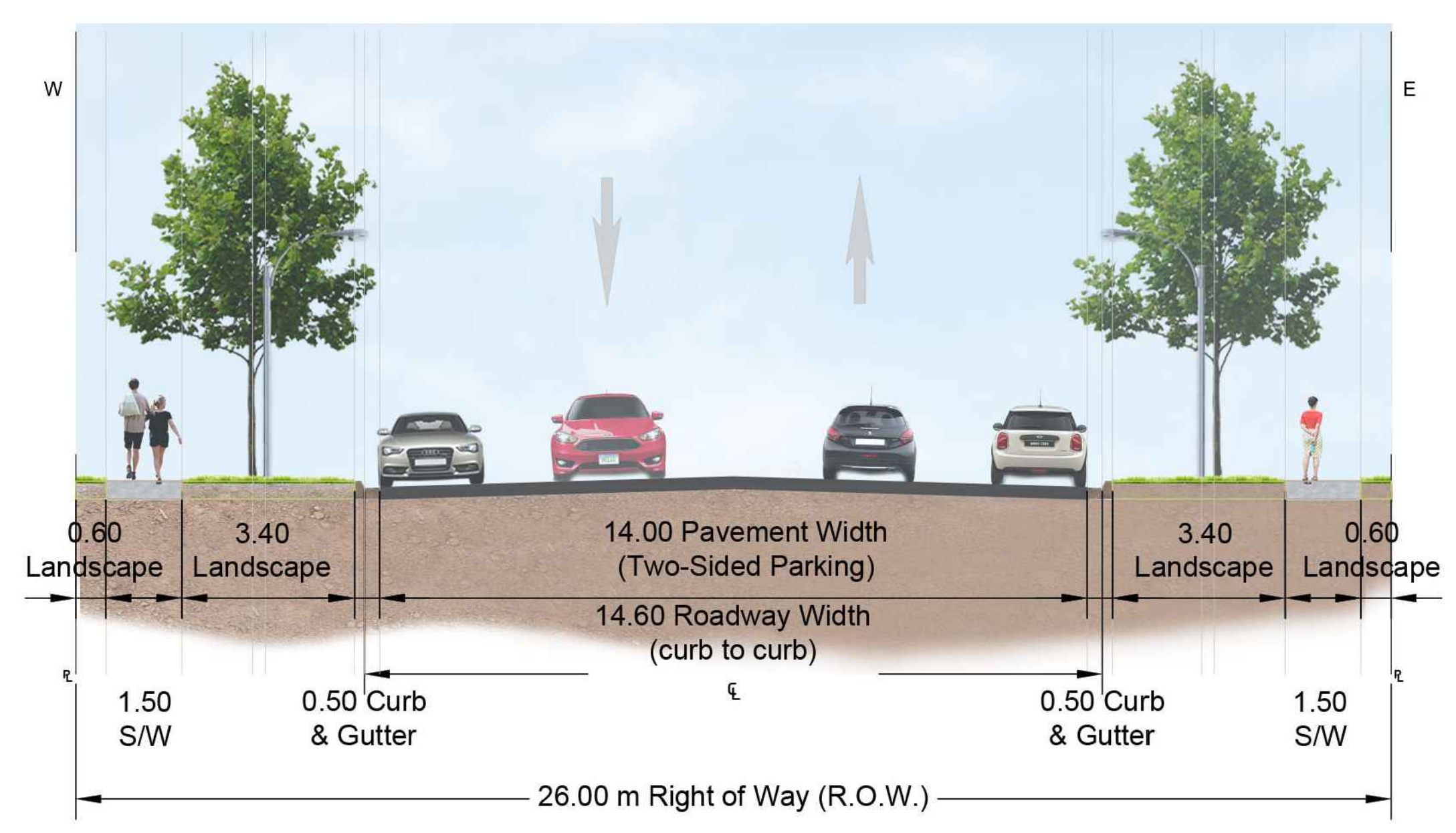
LIST OF ACCEPTABLE STREET TREES

The list is based on the Engineering Criteria Manual by the Town of Bradford West Gwillimbury

- Black Locust
Robinia pseudoacacia
- Silver Maple
Acer saccharinum
- Red Maple
Acer rubrum
- Sugar Maple
Acer saccharum
- Burr Oak
Quercus macrocarpa
- Red Oak
Quercus rubra
- Basswood
Tilia americana
- Serviceberry
Amelanchier
- Ironwood
Ostrya virginiana
- Hackberry
Celtis occidentalis
- White Elm
Ulmus americana L.
- Largetooth Aspen
Populus grandidentata
- Scarlet Oak
Quercus coccinea
- White Oak
Quercus alba
- Pin Oak
Quercus palustris
- Tulip Tree
Liriodendron



SECTION A-A: Public Street Cross-Section
18.0m ROW – 8.0m Pavement Width (8.6m Roadway Width) with 2.5m One-Sided Parking Spaces & 1.5m Sidewalk on one Side



SECTION B-B: Public Street Cross-Section
26.0m ROW – 14.0m Pavement Width (14.6m Roadway Width) with 2.5m Two-Sided Parking Spaces & 1.5m Sidewalk on both Sides



Basswood
Tilia americana



Black Locust
Robinia pseudoacacia



Burr Oak
Quercus macrocarpa



Hackberry
Celtis occidentalis



Ironwood
Ostrya virginiana



Red Maple
Acer rubrum



Pin Oak
Quercus palustris



Silver Maple
Acer saccharinum



Sugar Maple
Acer saccharum

STREETSCAPE



STORMWATER MANAGEMENT POND



PARK

